



ARCIS
FINE ART + COLLECTION CARE

ARCIS is Manhattan's premier 110,000 square foot
art storage facility and the first and only
Foreign-Trade Zone (FTZ)
for fine art and cultural property in the United States.

ARCIS is a new custom-designed facility,
engineered and constructed to museum-level specifications.

ARCIS' mission is to protect and preserve
the world's cultural legacy,
providing expert care for a discerning clientele
in a state-of-the-art, highly secure
and climate-controlled art storage facility.





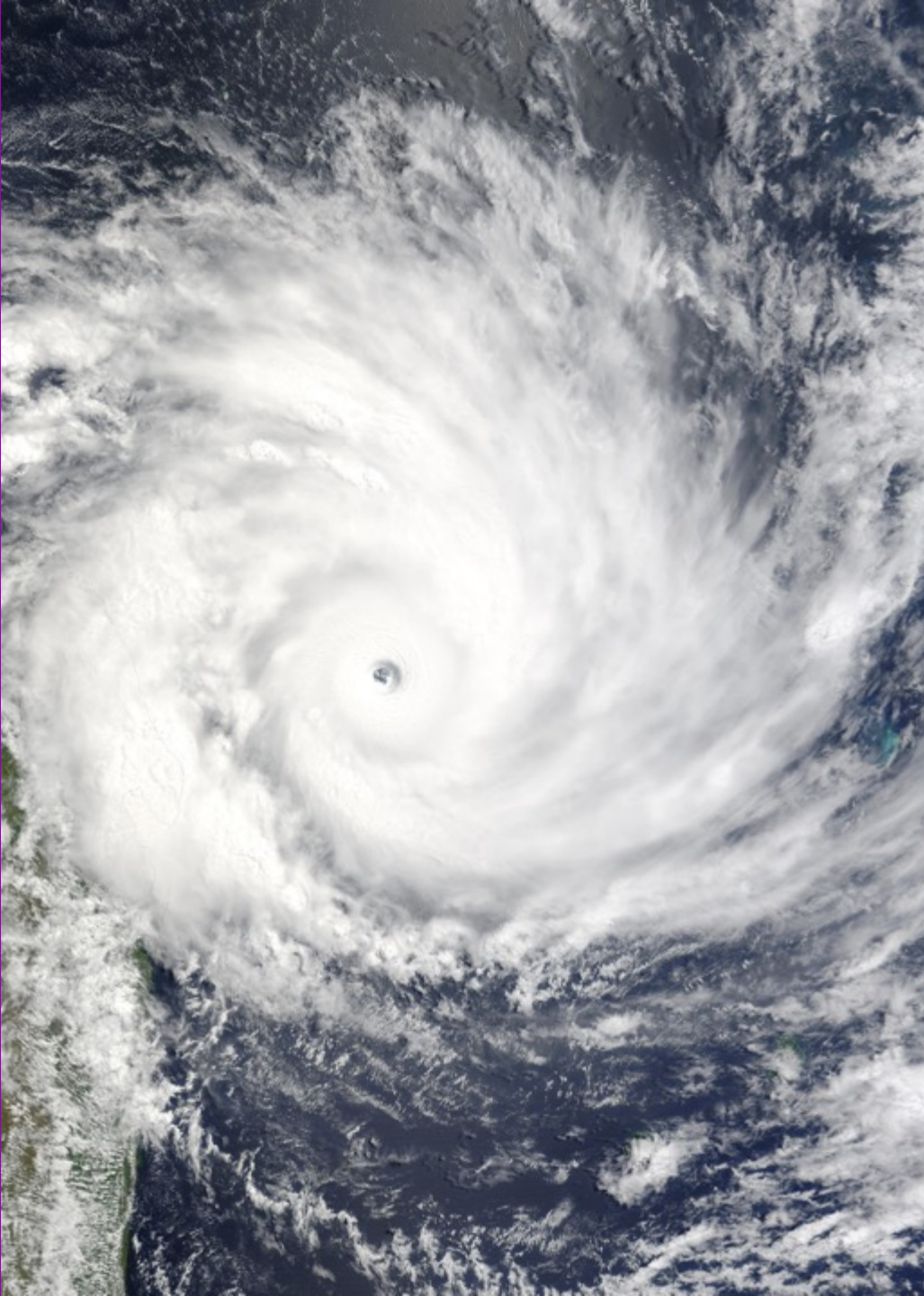
ARCIS is a stand-alone building engineered to museum-level specifications to maintain 70° Fahrenheit (+/- 2°) and 50% relative humidity (+/- 5%) with a minimum of three air changes per hour using MERV 13 filtration throughout.

The ARCIS design and construction team analyzed airflow, temperature and relative humidity standards using Computational Fluid Dynamic analyses to create a purpose-built facility that is unique in art storage. Space customization is possible and will be quoted during consultation to meet your specific collection needs.

The ARCIS facility was intentionally limited to 110,000 square feet as a result of meetings with the insurance underwriting community and its growing concern regarding accumulation risk associated with storing high-value art in and around New York City.

The risks associated with a single event triggering losses across multiple policies create challenges for underwriters. The larger the storage facility, the higher the concentration of insured risks, and when there are many facilities within a given geographic area, those risks increase exponentially. Consult your insurance broker about the potential to lower your insurance premium when moving your property into ARCIS.





ARCIS is outside the post-Hurricane Sandy flood and surge zones.

Coastal flood studies completed following Hurricane Sandy in October 2012* highlighted the change in flood risk for coastal areas including metropolitan New York City. According to the U.S. Geological Survey, Sandy caused widespread coastal flooding in southeastern New York. Peak water levels recorded at all U.S. Geological Survey stations in coastal areas of Long Island and New York City exceeded the Federal Emergency Management Agency (FEMA) 100-year base flood elevations for these sites. In all cases, the peaks from Hurricane Sandy surpassed anything previously documented.

ARCIS is safely located on high ground in Harlem.

*www.usgs.gov/centers/ny-water/science/hurricane-sandy-new-york



Van Gogh Museum Professional Services contributed its expertise in collaboration with Vidaris, Inc., a consultant to the Whitney Museum, to design a mechanically redundant HVAC system backed up by a 750 kWh natural gas emergency generator capable of powering 100% of the entire facility - indefinitely.

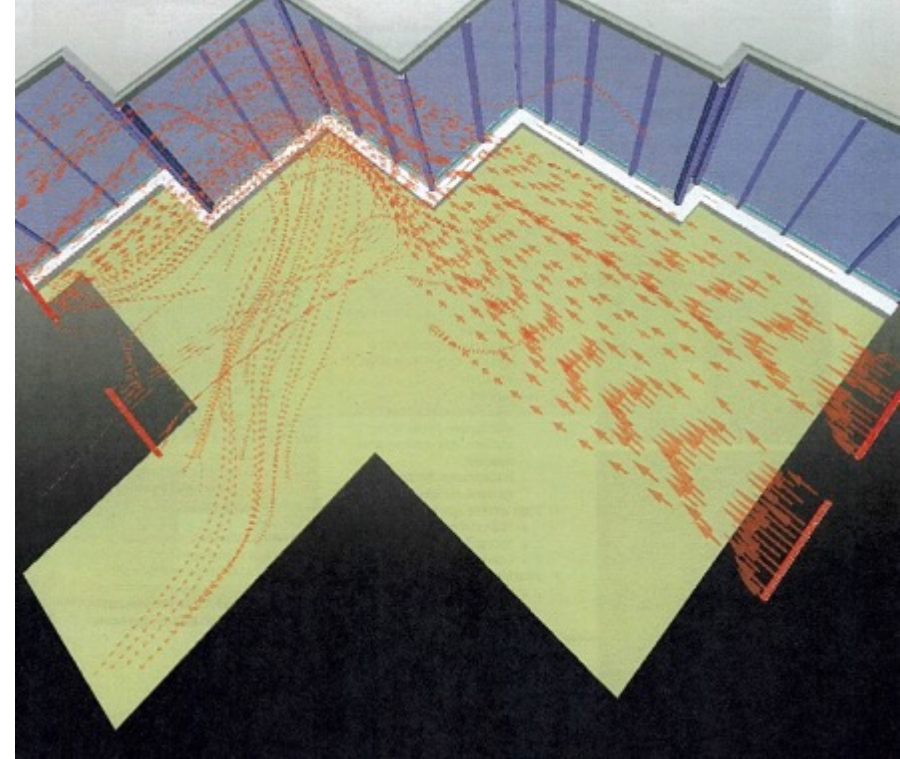
Following Hurricane Sandy, the ARCIS team recognized the importance of uninterrupted operations to protect its clients' collections. ARCIS worked with Cummins Power Generation to custom design its emergency back-up generator. Powered by natural gas, it is capable of running the entire facility indefinitely. Eliminating the need for fuel delivery sets ARCIS notably apart from its competitors. The emergency generator specifications were designated a Hallmark NYSERDA* Project, supporting ARCIS' position as an art world leader in sustainable design.

*Setting a new standard for humidification exceeding current ASHRAE guidelines**, ARCIS has integrated atomization technology into its climate-controlled environment.*

Maintaining proper temperature and humidity is critical to the long-term stability of fine art and cultural property. While temperature control alone is straightforward, balancing an appropriate humidity level with specific temperature is exceedingly complicated and energy intensive. Advised by Van Gogh Museum consultants to utilize atomization to produce humidity, ARCIS is protected against bacterial growth and mineral dust accumulation—common pitfalls in ultrasonic technology, and excessive energy consumption and slow response times common to steam systems.

*New York State Energy Research and Development Authority

** ASHRAE www.ashrae.org



Computational Fluid Dynamics (CFD)

Better Buildings, Reduced liability

Vidaris uses Computational Fluid Dynamics (CFD) to solve complex problems of comfort, moisture condensation and contaminant dispersion.

Affording complete discretion, the client experience at ARCIS includes use of its modern reception area, private conference room and “black-car” client entrance.

Access to all floors is strictly controlled and monitored. On request, property can be installed in any of five small- to large-scaled, column-free private viewing rooms outfitted with color balanced and adjustable gallery lighting, reinforced walls and polished concrete floors.

The state-of-the-art computerized inventory and tracking system ensures strict client protocol is followed at every stage of collection management. Microsoft based, the system exceeds current industry practices and has satisfied U.S. Customs and Border Protection inventory control requirements with respect to ARCIS’ Foreign-Trade Zone Status.



ARCIS is uniquely equipped to protect and preserve the world’s finest collections. The ARCIS team delivers years of art storage experience and a deep passion for collection care to benefit its clients:

Private Collectors

Dealers and Galleries

Art Advisors

Art Funds

Museums and Institutions

Artists and artist’s estates

Foundations

Trusts and Estates

Family Offices

Architects and Interior Designers





ARCIS is the only purpose-built Foreign-Trade Zone (FTZ) in the United States specifically designated for the storage of fine art and cultural property. It is a unique, high-security building conveniently located in Manhattan. Please consult underwriters, as well as legal and tax counsel, for advice on how best to capitalize on potential insurance and tax benefits.

Known as “Freeports” overseas, FTZs in the United States are under the supervision of U.S. Customs and Border Protection (CBP).^{*} They exist to facilitate international trade and are technically outside U.S. commerce thus creating a tax deferred zone for foreign property while it remains in FTZ storage.

When property in an FTZ is sold, the seller may be required to pay income tax on the income received as a result of the sale, and the buyer should consider applicable sales taxes, value-added taxes (VAT) and customs duties potentially due on final delivery outside the FTZ, subject to the effective laws in the country of delivery.

ARCIS provides storage options for foreign and domestic assets with enhanced security that meets or exceeds security guidelines and procedures issued by U.S. Customs and Border Protection.

^{*}www.cbp.gov/border-security/ports-entry/cargo-security/cargo-control/foreign-trade-zones/about





ARCIS STORAGE

- ARCIS offers its clients five floors of storage in its 110,000 square foot facility. Private Room storage is available from 42 square feet up to 12,250 square feet. Our on-site storage designer will assist in customizing space to meet your specific needs.
- Managed Care storage is designed to meet the needs of clients who do not choose to use a private room. The Managed Care space can expand or contract according to clients' monthly needs. The ARCIS team manages the inventory with state-of-the-art computerized inventory and tracking systems.
- The Oversize Storage space provides ceiling heights up to 18 feet to meet the needs of oversized artworks and cultural property.
- All five floors are outfitted with independent pre-action dry line fire suppression systems. Early warning smoke detection is linked to the pre-action systems throughout the building.
- ARCIS features Central Station monitored burglar and fire alarm systems.





ARCIS SERVICES

- Client site visits are conducted by ARCIS' fully vetted and trained art handling staff to evaluate the project, and to prepare condition and inventory reports. Subsequent to a site visit, ARCIS provides quotations for requested services.
- Bespoke installation is executed to plan with utmost care given to all essential details.
- ARCIS provides local art transport via GPS tracked climate-controlled air ride vehicles and logistics coordination for all national and international shipments.
- ARCIS offers two fully enclosed loading bays, one of which can function as a discreet “black-car” client entrance. The second accommodates box truck and 18-wheeler deliveries to protect property from inclement weather.
- ARCIS is TSA-certified to screen and pack property for international and domestic air shipments.





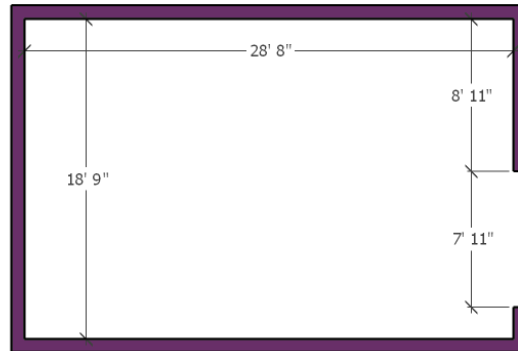
ARCIS VIEWING ROOMS

- The five gallery-quality viewing rooms are free of any obstructions and feature viewing heights up to 18 feet with ERCO lighting throughout. Viewing room #3 features a 4,000 pound capacity trolley hoist that is fully automated with wireless controls to allow objects to be raised and lowered for viewing and inspection.
- Available by the day or half day, the ARCIS viewing rooms were designed to give clients total privacy in gallery-like spaces large enough to accommodate property in a range of sizes.

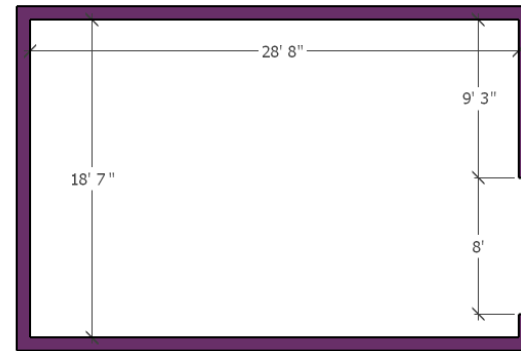


ARCIS CLIENT VIEWING ROOM DIMENSIONS

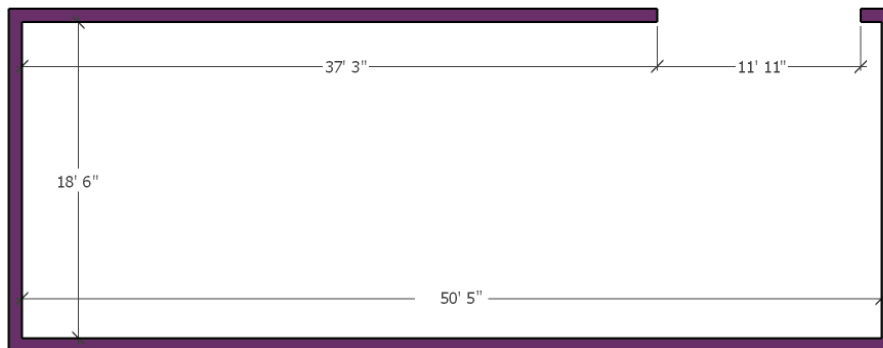
Viewing Room 1



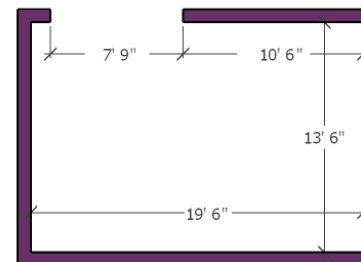
Viewing Room 2



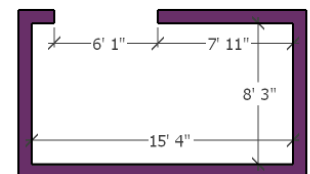
Viewing Room 3



Viewing Room 4



Viewing Room 5



ARCIS CLIENT VIEWING ROOM SPECIFICATIONS

Viewing Room 1

537 ft² – 28' 8" x 18' 9"

16' 4" to beam

13' 1" to lights

ERCO Lighting – warm white 3000K

Automated sliding door – 11' 11" x 7' 11" doorway

Wall construction – ¾" plywood covered by 5/8" sheetrock

Full climate control – 3 air changes per hour, 70°F - 50% RH

Viewing Room 2

530 ft² – 28' 8" x 18' 7"

16' 1" to beam

13' 6" to lights

ERCO Lighting – warm white 3000K

Automated sliding door – 11' 11" x 8' doorway

Wall construction – ¾" plywood covered by 5/8" sheetrock

Full climate control – 3 air changes per hour, 70°F - 50% RH

Viewing Room 3

932 ft² – 50' 5" x 18' 6"

20' beam

18' to monorail

14' 1" to lights

2-ton capacity electric chain hoist – 15' 5" to bottom of hook when fully raised

ERCO Lighting – warm white 3000K

Automated sliding door – 13' 11" x 11' 11" doorway

Wall construction – ¾" plywood covered by 5/8" sheetrock

Full climate control – 3 air changes per hour, 70°F - 50% RH

Viewing Room 4

263 ft² – 19' 6" x 13' 6"

19' 10" to beam

12' 10" to lights

ERCO Lighting – warm white 3000K

Automated sliding door – 12' x 7' 9"

Wall construction – ¾" plywood covered by 5/8" sheetrock

Full climate control – 3 air changes per hour, 70°F - 50% RH

Viewing Room 5

126 ft² – 15' 4" x 8' 3"

15' 2" to beam

12' 2" to lights

ERCO Lighting – warm white 3000K

Sliding door – 10' x 6' 1" doorway

Wall construction – ¾" plywood covered by 5/8" sheetrock

Full climate control – 3 air changes per hour, 70°F - 50% RH



EXECUTIVE TEAM



Tom Sapienza

Executive Director
tsapienza@arcisartstorage.com

Tom Sapienza brings significant decorative and fine art storage, managerial, and client relationship experience to ARCIS. Tom was co-founder of Crozier US Holdings, LLC, Crozier Decorative Arts, LLC and Crozier Long Island, LLC. During Tom's nine-year tenure at Crozier he directed the company's acquisition strategy and facilitated the increase of museum-quality space used by domestic and international clients. Tom began his career as a CPA focused on commercial real estate, international freight forwarding and telecommunications industries.



Roxanna Zarnegar

Director of Operations,
Training and Development
rzarnegar@arcisartstorage.com

Roxanna brings deep art world experience to her role at ARCIS having served as Senior Vice President of artnet where she directed a strategic redesign of its auction and private sales platform, garnering industry accolades as a Webby Award Honoree. Previously Ms. Zarnegar was Chief Operating Officer of Christie's Americas, where she was responsible for client services, auction and gallery operations, logistics and production. Most recently, Roxanna has provided strategic management consulting for the global art business and luxury markets, advising private equity firms on auction marketplaces and art market startups.



Walter Biggs

Director of Facilities
wbiggs@arcisartstorage.com

Walter comes to ARCIS from a long career at SperoneWestwater, where he rose to the post of Managing Director. While at Sperone Westwater, Walter contributed to the development of the gallery's 257 Bowery space, Foster+Partners critically acclaimed building in New York. Walter plays an essential role in providing expertise with management of the sustainable construction and mechanical technologies integral to ARCIS. A veteran of the New York City art world, Walter has been passionately involved in art services and museum and gallery management since college. He is a practicing artist, living in Harlem near ARCIS headquarters.



Mary Parker

Director of Business Strategy
And Development
mparker@arcisartstorage.com

Mary Parker joined ARCIS after years focused on multi-channel strategic sales and marketing for museums, fine art galleries and auction houses, developing a particular expertise in ultra-high-net-worth client relationship management. As Vice President, Head of the Client Development department at Sotheby's in New York, Mary built the department into a highly successful strategic planning cohort tasked with fully leveraging client relationships across the organization. Previously, Mary was director of the Kenneth Rendell Gallery in Manhattan, and held sales positions at Everything But The House and Wealth-X.



ARCIS
FINE ART + COLLECTION CARE

(212) 804-6600

